


- **Dictionary** – The phrases from the selected dictionary will be used on the COE pages. By using a custom dictionary, you can modify the standard phrases in order to generate a specific look and feel. If you need the COE to display in another language, you can select one of the standard foreign language dictionaries.
- **Regional Options Location** – Dates and times will display on the COE pages according to the format of the regional options selection. The selections are pulled from your Operating System.
- **Description** – If using alternate descriptions, select the description to be used. Alternate descriptions are available for a variety of system fields (item descriptions, function descriptions, etc.) and are only available to organizations using alternate descriptions.
- **Logon** – Determines the Logon Configuration that will be used. The available options are configured on the Logon Configuration screen.

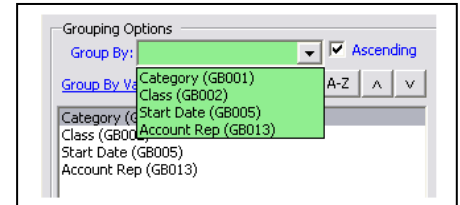
Add Descriptions

- If you wish to use non-standard description fields, that are not a group-by or order-by value, add them using the Add Descriptions field. You may multi-select fields by using the multi-select button. 
- When using the “Column” format in COE, the last column displayed is “Location.” The Location column can be overridden to display the value selected in the Add Description drop-down. In addition to selecting a value from the drop-down, you must also edit the coe_p1_all.aspx file. Please contact Client Care for more detailed information.

Calendar of Events - Service Order Processing		
Welcome to our calendar of events. Click on an event name for more details.		
No Group Value Internal Meeting International Local National Regional United Kingdom USA		
No Group Value		
Date	Event	Location
Sat 02/21/09 to Wed 02/25/09	D. R. Burbank	
Mon 01/05/09 to Fri 01/09/09	Ungerboeck Systems International	
Sun 01/11/09 to Sat 01/17/09	Ungerboeck Systems International	
Thu 07/02/09	Sales Meeting	
Sat 03/28/09	Conference Planning	Room 03
Sat 04/11/09	Sales Recap Meeting	
Tue 04/07/09	Web Sponsored Events	
Wed 05/06/09	Bob the Magician	
Mon 09/01/08 to Wed 09/03/08	Monthly Seminar Series	
Mon 10/06/08 to Wed 10/08/08	Monthly Seminar Series	
Fri 04/10/09	Executive Summit	
Sat 04/11/09	Saturday Night Live Meeting	
Thu 03/26/09	Weekly Meeting	
Wed 04/08/09	2009 April Marketing Seminar	
Wed 03/25/09	Friendly Paintball Meeting	

Grouping Options

- Group By – From the Group by Values link users will select from which values they want to sort the data by. Automatically defaults to Start Date.
- Group By Values – These are the Values users may choose to sort the data by.
- Ascending – Select this checkbox to sort the data in ascending order. If the checkbox is not selected the data will be sorted in descending order.
- Use the A-Z button, or the up and down arrows to sort the group alphabetically, or to move values up or down the list.



Example:

- Clicking the Group by Values link, we have chosen the values of Category, Class, Start Date, and Account Rep. These are reflected in the Group By drop-down menu. What option is selected in the Group By field is reflected on the Service Order Processing web link.

Grouped by Category

Calendar of Events - Service Order Processing		
Welcome to our calendar of events. Click on an event name for more details.		
No Group Value Internal Meeting International Local National Regional United Kingdom USA		
No Group Value		
Date	Event	Location
Sat 02/21/09 to Wed 02/25/09	D. R. Burbank	
Mon 01/05/09 to Fri 01/09/09	Ungerboeck Systems International	
Sun 01/11/09 to Sat 01/17/09	Ungerboeck Systems International	
Thu 07/02/09	Sales Meeting	
Sat 03/28/09	Conference Planning	Room 03
Sat 04/11/09	Sales Recap Meeting	
Tue 04/07/09	Web Sponsored Events	
Wed 05/06/09	Bob the Magician	
Mon 09/01/08 to Wed 09/03/08	Monthly Seminar Series	
Mon 10/06/08 to Wed 10/08/08	Monthly Seminar Series	
Fri 04/10/09	Executive Summit	
Sat 04/11/09	Saturday Night Live Meeting	
Thu 03/26/09	Weekly Meeting	
Wed 04/08/09	2009 April Marketing Seminar	
Wed 03/25/09	Friendly Paintball Meeting	

Grouped by Start Date

Calendar of Events - Service Order Processing		
Welcome to our calendar of events. Click on an event name for more details.		
April 2008 through April 2010 April 2008 May 2008 June 2008 July 2008 August 2008 September 2008 October 2008 November 2008 December 2008 January 2009 February 2009 March 2009 April 2009 May 2009 June 2009 July 2009 August 2009 September 2009 October 2009 November 2009 December 2009 January 2010 February 2010 March 2010 April 2010		
April 2008		
Date	Event	Location
Tue 1 - Wed 30	Beautiful Gardens 2009 (Began Jan 1, 2008 and ends Jun 30, 2009)	
Tue 1 - Wed 30	Antiques Trade Fair 2008 (Began Jan 1, 2008 and ends Dec 30, 2008)	
Sat 5 - Tue 15	International Auto Show	
Fri 11 - Sun 13	2008 Legal Developments Spring Conference	
Sun 13 - Wed 16	USI Business Seminar	
Sun 13 - Wed 16	2008 European Conference	
Wed 16 - Fri 18	ACME Annual Convention	
Sat 19	Procurement Managers Convention	
Sun 20 - Sun 27	Airport Conference	
Tue 22 - Thu 24	Scholarships Workshop	
Wed 23 - Fri 25	Mackenzie's Wedding Banquet	
May 2008		
Date	Event	Location
Thu 1 - Sat 31	Beautiful Gardens 2009 (Began Jan 1, 2008 and ends Jun 30, 2009)	Hall C

Allow Saving to Outlook Calendar – If checked, allows the event to be saved on the users Outlook Calendar.

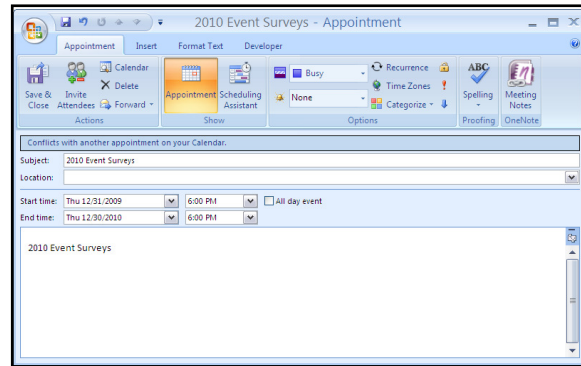
Calendar of Events - Service Order Processing
Welcome to our calendar of events. Click on an event name for more details.

April 2008 through April 2010

[April 2008](#) | [May 2008](#) | [June 2008](#) | [July 2008](#) | [August 2008](#) | [September 2008](#) | [October 2008](#) | [November 2008](#) | [December 2008](#) | [January 2009](#) | [February 2009](#) | [March 2009](#) | [April 2009](#) | [May 2009](#) | [June 2009](#) | [July 2009](#) | [August 2009](#) | [September 2009](#) | [October 2009](#) | [November 2009](#) | [December 2009](#) | [January 2010](#) | [February 2010](#) | [March 2010](#) | [April 2010](#)

April 2008

Date	Event	Location
Tue 1 - Wed 30	Beautiful Gardens 2009 (Began Jan 1, 2008 and ends Jun 30, 2009)	Hall C
Tue 1 - Wed 30	Antiques Trade Fair 2008 (Began Jan 1, 2008 and ends Dec 30, 2008)	
Sat 5 - Tue 15	International Auto Show	
Fri 11 - Sun 13	2008 Legal Developments Spring Conference	
Sun 13 - Wed 16	USI Business Seminar	
Sun 13 - Wed 16	2008 European Conference	
Wed 16 - Fri 18	ACME Annual Convention	
Sat 19	Procurement Managers Convention	
Sun 20 - Sun 27	Airport Conference	
Tue 22 - Thu 24	Scholarships Workshop	
Wed 23 - Fri 25	Mackenzie's Wedding Banquet	



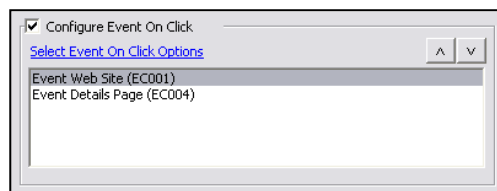
Allow Caching – Caching refers to of keeping a copy of a page or image you have already seen. Web browsers typically cache files that they display and ask the server to only download what has actually changed, rather than always downloading the entire page, thus speeding up your next visit to that page. You may choose to have the page cached, and how often, or may choose to not allow caching and updates to a page are only seen upon refreshing the page.

- Example of Allowing Caching:
 - The user is a hotel, with a calendar of events on a monitor in the lobby for public view. As the calendar is updated throughout the day, at the intervals indicated in the configuration, so is the screen on view in the lobby without having to be physically refreshed upon each change.

Configure Event on Click – This option allows the user to select what page will open when the hyperlink to the Event is clicked. Use the “Select Event On Click Options” link to choose the page that will first appear. If that page is not available, the page will default to the next page, in the order you arrange them.

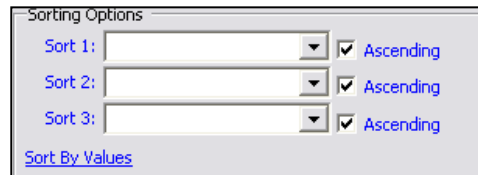
Example:

- The Event Web Site is the first page listed, therefore the default.
- If the Event Web Site is down for maintenance or otherwise unavailable, the next page listed will become the default, in this example, the Event Details Page.



Sorting Options

There are three fields under Sorting Options, which allow you to select the criteria that the Groups are sorted by, and in what order you wish to have them sorted.



- By using the Sort By Values link you can select which values you wish to sort by, and then filter down further by arranging those values in sorting order 1, 2, and 3. You may also use the checkbox to have them sort in ascending or descending order.

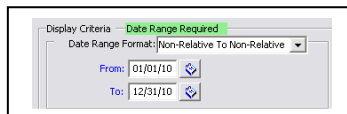
Display Criteria/Search Page

Date Range Format - Choose from four formats: Non-Relative to Non-Relative, Non-Relative to Relative, Relative to Non-Relative, and Relative to Relative.

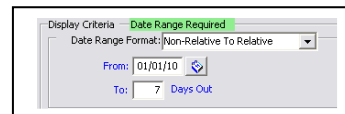
- Relative dates are established by a specific time frame, for example, seven days out. They use the current date to determine the date range.
- Non-Relative dates will show a specific time frame without constraints.

Example:

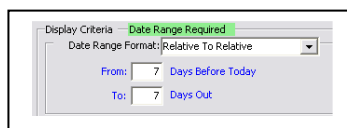
Non-Relative to Non-Relative



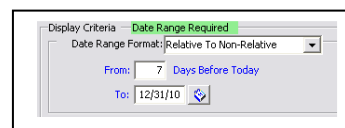
Non-Relative to Relative



Relative to Relative



Relative to Non-Relative



- **Date to Use** – Choose the date the user wants to display for the events on your calendar, Start Date or Move-In date.
- **Status** – From the Bookings tab on the Edit Event window, select the Status range the user wishes the information to be sorted and what will be displayed.
- **Event Sensitivity** – On the Supplement tab of the Edit Event window elect the sensitivity range the user wants to view, from Public to Confidential information.
- **Relative Space** – Select the Anchor Venue you wish to use from the Bookings tab of the Edit Event window. This is used to filter events which have a designated Anchor Space.
- **Show Events to the End of the Month** – Shows events that cross over the end of a month.

Search Page Fields

- **Field to Show** – This is where you can configure what fields will be searchable, and in what order they will appear on the Search Page. Select the items you wish by checking the checkbox, then enter a number 1-10 to designate what order in which they will appear. You can also designate the maximum day span you wish to view.

Field To Show	Sequence
<input checked="" type="checkbox"/> Category	1
<input checked="" type="checkbox"/> Class	2
<input checked="" type="checkbox"/> Type	3
<input type="checkbox"/> Rank	
<input type="checkbox"/> Account	
<input type="checkbox"/> Anchor Venue	
<input type="checkbox"/> Anchor Venue Type	
<input type="checkbox"/> Date	
<input type="checkbox"/> Event Name	
<input checked="" type="checkbox"/> Keyword Search	4
Maximum Day Span:	

Not Spalding1, Carrie?

Calendar Of Events Search

Define the search specifications using the selection criteria below. The more criteria you enter, the more specific your search results will be. For the list boxes below, multiple items can be selected by holding down the SHIFT or CTRL keys and clicking on the item(s).

Date Range: 01/10/10 - 05/09/10 (MM/DD/YY)

Date Search Information:

- Searchable Date Range: Sunday, January 10, 2010 - Sunday, August 8, 2010
- Maximum Day Span Of Search: 120

Category:

- All
- Local
- National
- New Category
- Regional

Class:

- All
- Association
- Church
- Education

Type:

- All
- Children's Club
- Concert
- Clear
- Brighte

Keyword:

- **Values** – Multiselect boxes that are used as display criteria and define what selections are available on the Search Page.
 - Choose items from Categories, Classes, Types, Ranks, Accounts, Anchor Venues and Anchor Venue Types by selecting the link for each. Use the box to designate the order and if you want them listed alphabetically.